



OVERLOOK COHOUSING ZERO ENERGY READY HOMES DESIGNED AND BUILT BY GREEN HAMMER

Overlook Cohousing is a community of six **Zero Energy Ready** custom homes located in the Overlook neighborhood of Portland that is designed to encourage social interaction through shared spaces and amenities. With a focus on high-performance building design and supporting a live-work lifestyle, the community will be more resilient to climate change while also supporting active families.

Led by Green Hammer Design Build, the project aims to be Earth Advantage Platinum Zero Energy Ready certified. Each home has **3 bedrooms, 3 baths**, spacious living areas with natural day lighting, plenty of creative storage, and a laundry closet.

Residents will have access to shared spaces such as a common courtyard set among existing fir trees, gardens, and a common house that can accommodate groups of up to 24 people. The common house is equipped with a kitchenette, an outdoor dining patio, and a guest suite.

HOME FEATURES:

Zero Energy Ready

Optimal Indoor Air Quality + Health

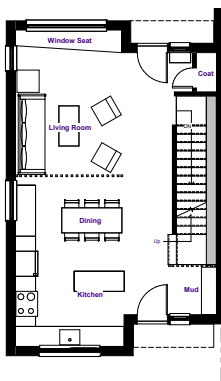
Comfort and Low Energy Use in All Seasons

Exceptional Durability and High-Quality Construction

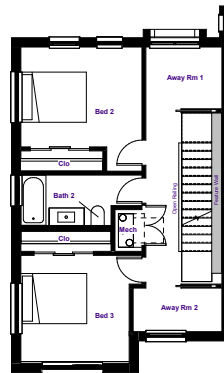
Responsible, Inspiring Design

3-Story Townhome

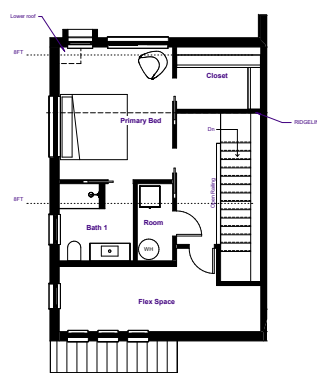
3 Bed, 3 Bath, 1,978 SF



Main Floor



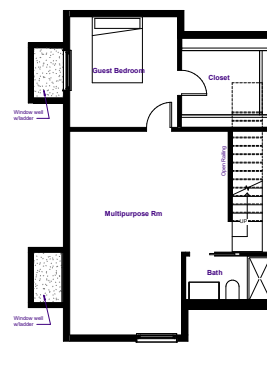
Second Floor



Third Floor

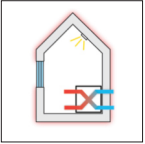
3-Story Townhome w/Basement

4 Bed, 3 Bath, 2,637 SF



Basement
+ 659 SF

WHAT DOES IT MEAN TO BUILD 'GREEN'?



A Holistic Approach to Energy Efficiency

Zero Energy buildings are able to produce as much energy as they consume. This is achieved through a holistic approach to a building's systems – airtight, high-quality construction and super-insulated envelopes, and the use of photovoltaic panels. Overlook Cohousing has excellent southern exposure and will be 'solar-ready'.



Optimal Health and Indoor Air Quality

Whole-house 'cascading' ventilation ensures fresh air is distributed throughout each home. An ultra efficient heat recovery ventilation system keeps the indoor air quality clean and healthy. Healthy building materials also help ensure optimal indoor air quality.



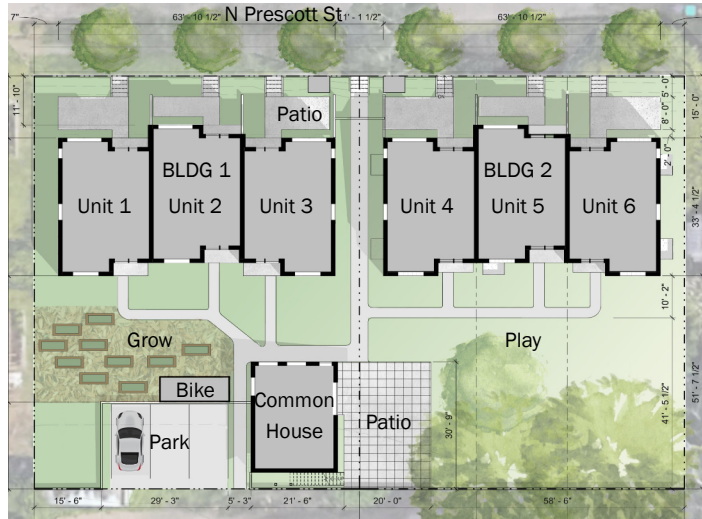
Comfort in All Four Seasons

Our high-performance building envelope consists of durable, multi-point closure triple-pane windows and insulation that is up to two times that of a typical 'code' building. High-tech membranes prevent air leaks (draftiness) and manage vapor and water intrusion. This type of enclosure is extremely durable, and creates consistent, comfortable temperatures in all seasons.

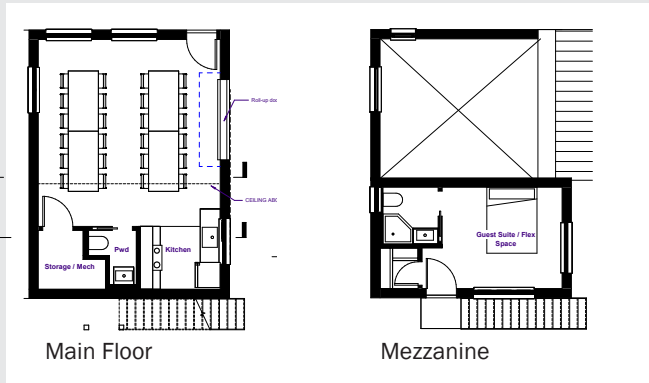


Site-Appropriate Design

High-performance features and healthy inspiring design are vital for the health of the buildings and their occupants. Highly efficient use of space allows residents to live large with a low / no carbon footprint. Each home features expansive windows and two "Away Rooms" where family members can retreat to rest, work, or play.



Common House Residents will have access to shared spaces such as a common courtyard among existing fir trees, gardens, and a common house that can accommodate groups of 24 people. The common house is equipped with a kitchenette, an outdoor dining patio and a guest suite.



For sales information contact: Overlook Cohousing Community

1836 N Prescott St

Portland, OR 97217

(503) 901-9339

lindsay.eric@gmail.com



Green Hammer Design Build
 226 SE Madison St, Suite 180
 Portland, OR 97209
503.804.1746 | CCB#163466